



FOR SALE

**BUSINESS OR PREMIUM
PERSONAL USE BAYS**

**STOREHOUSE | UNITS 204, 205, 206 & 207
8920 GRIGG ROAD, KELOWNA BC**

STEVE LAURSEN

PERSONAL REAL ESTATE CORPORATION

250.808.8101

www.rlkcommercial.com

ROYAL LEPAGE KELOWNA

COMMERCIAL



THE OPPORTUNITY

Introducing an exceptional opportunity to purchase business or premium personal use bays at Storehouse. Located within the Kelowna North industrial hub, these four side-by-side commercial strata units offer a range of features and options tailored to meet your needs. Each space provides a versatile canvas for workspace or additional personal use storage and garage space. Offering 4,752 square feet of space and 22-foot clear ceiling height, each unit includes one reserved parking stall and one loading bay, providing convenience and accessibility.

Whether you're looking to expand your business or seeking a premium personal use space, these units provide flexibility and a range of features to suit your needs. Purchase options are available, allowing you to acquire units individually or combined.

PROPERTY DETAILS



MUNICIPAL ADDRESS

Unit 204, 205, 206, & 207
8920 Grigg Road
Kelowna, BC



UNIT SIZE

Unit 204	1,188 SF
Unit 205	1,188 SF
Unit 206	1,188 SF
Unit 207	1,188 SF
Combined	4,752 SF



ZONING

I3 | Heavy Industrial



YEAR BUILT

2018



STRATA FEES

\$313.39 / Month



POSSESSION

Immediate



PID

Unit 204	030-449-766
Unit 205	030-449-774
Unit 206	030-449-782
Unit 207	030-449-791



PURCHASE OPTIONS

Units may be purchased individually or combined



LIST PRICE

Unit 204	\$489,900
Unit 205	\$489,900
Unit 206	\$489,900
Unit 207	\$489,900

Combined \$1,959,600



207
206
205
204

8920

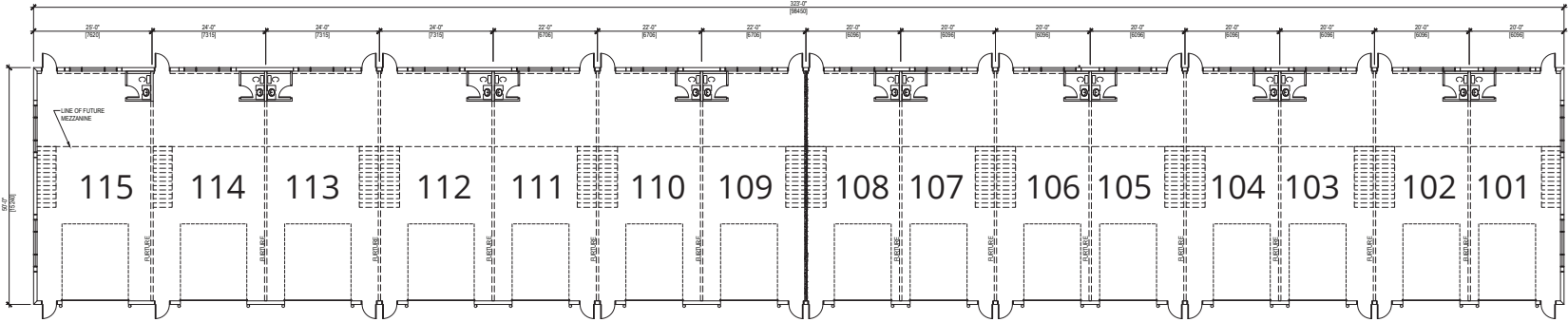
STOREHOUSE
8930

8860

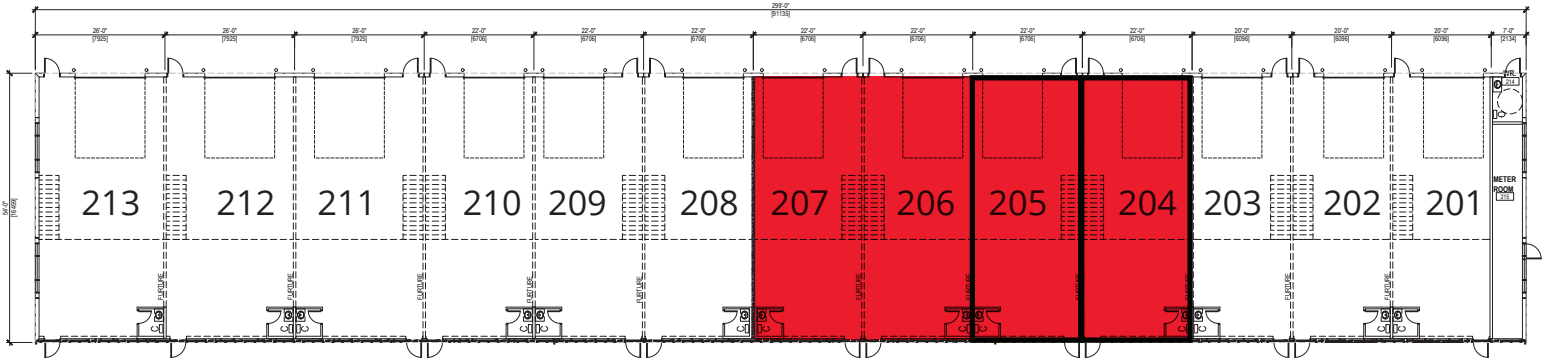
FEATURES

CEILING HEIGHT	22-Foot clear ceiling height providing ample vertical space
PARKING & LOADING	<p>Each unit includes one reserved parking stall and one loading bay, ensuring convenience and ease of access.</p> <p>One exclusive 12' W x 16' H electric grade load overhead door per unit (smartphone compatible)</p>
WASHROOMS	Roughed-in plumbing allows for easy customization and build-out of washroom facilities
LIGHTING	<p>T-5 lighting fixtures throughout providing excellent illumination throughout the units.</p> <p>Large windows within the overhead door and a transom window in the rear wall allow for ample natural light into the space</p>
VENTILATION, HEAT, & HVAC	Ceiling fans, natural gas unit heater, and HVAC systems installed in each unit, ensuring proper ventilation and climate control
CONSTRUCTION & INSULATION	<p>9" Pre-cast concrete tilt up exterior walls</p> <p>Ready for paint, fully dry-walled ceilings and interior walls. Fully insulated and sound proofed ensuring privacy</p>
POWER	200 AMP, 3-Phase electrical service
DRAINAGE	Floor drain installed in ground floor slab

BUILDING PLAN



BUILDING 1

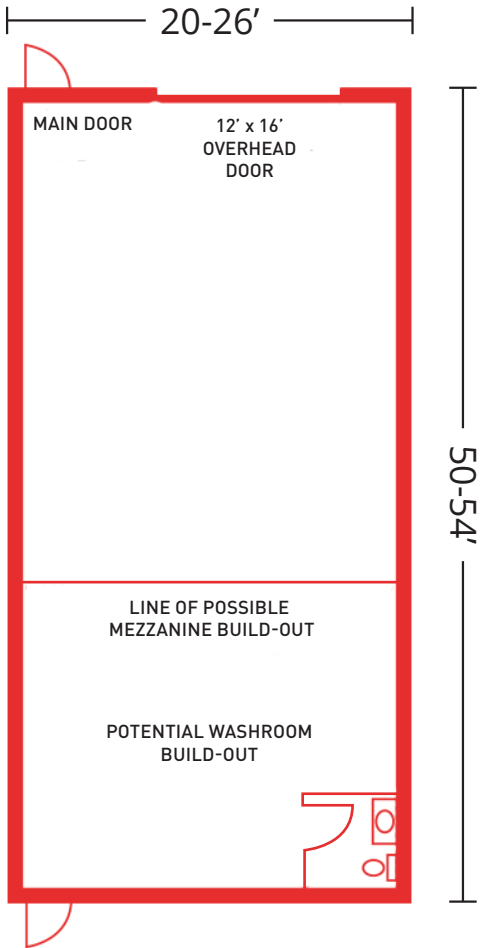


BUILDING 2

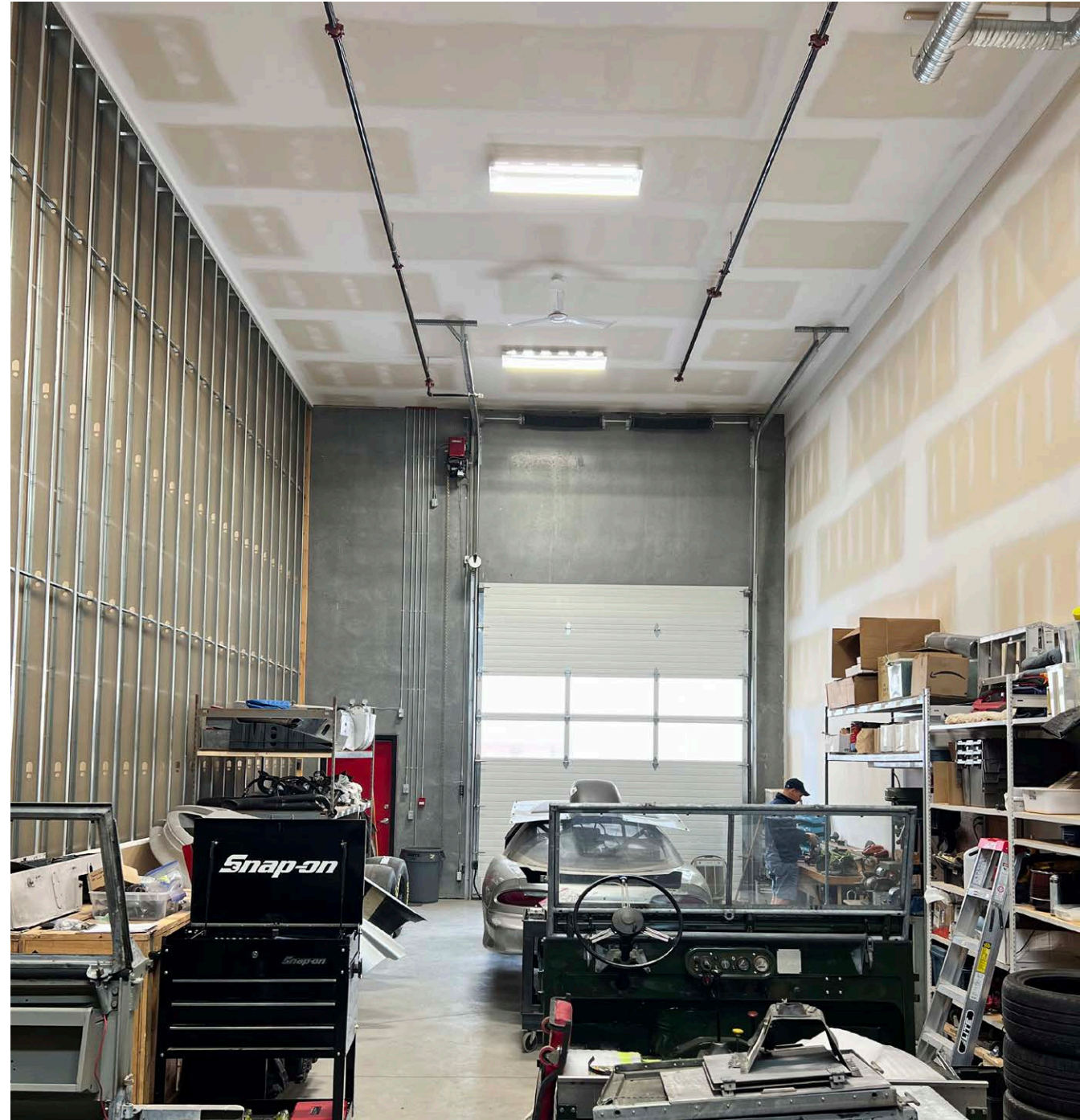


GRIGG ROAD

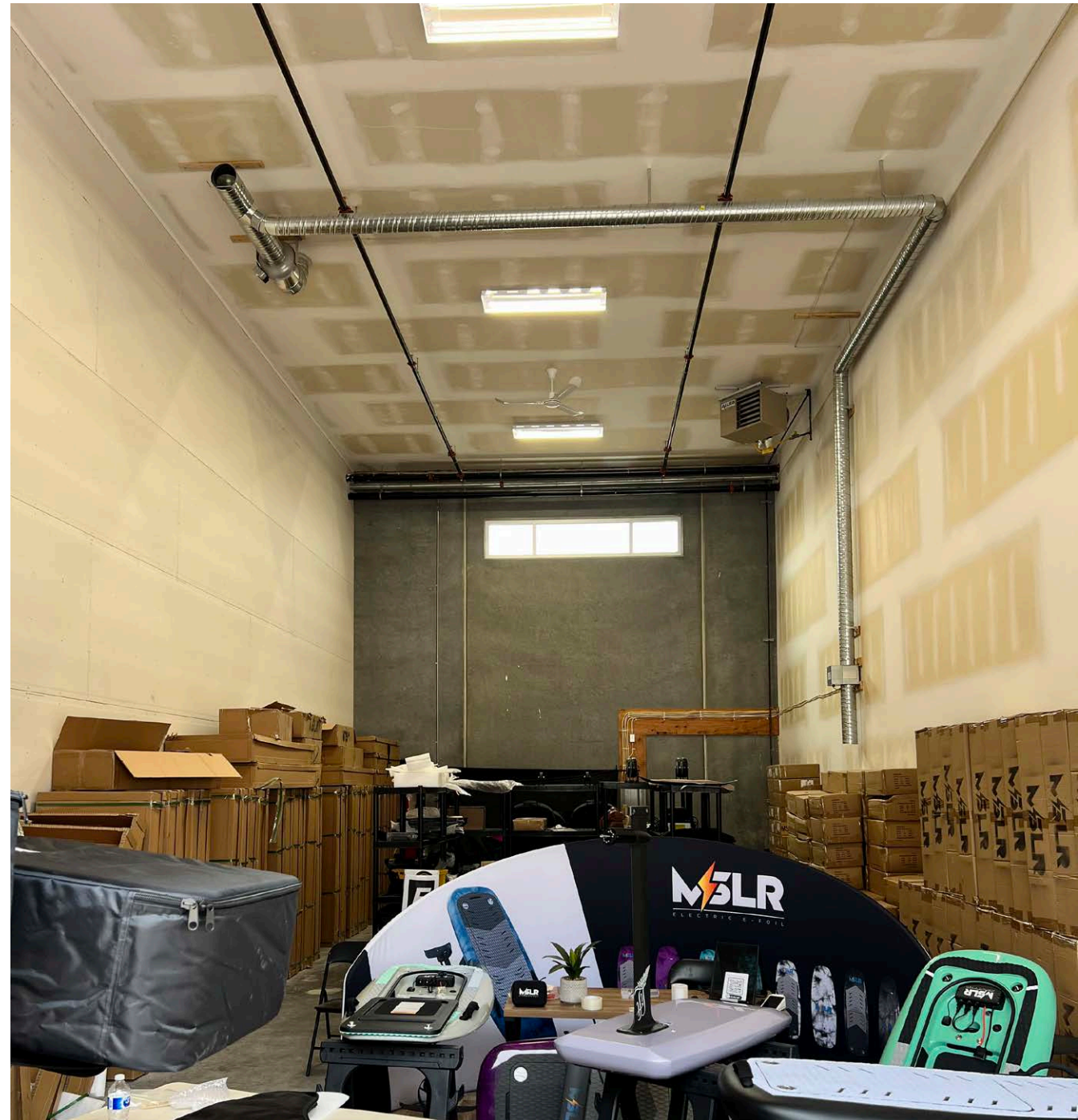
FLOOR PLAN



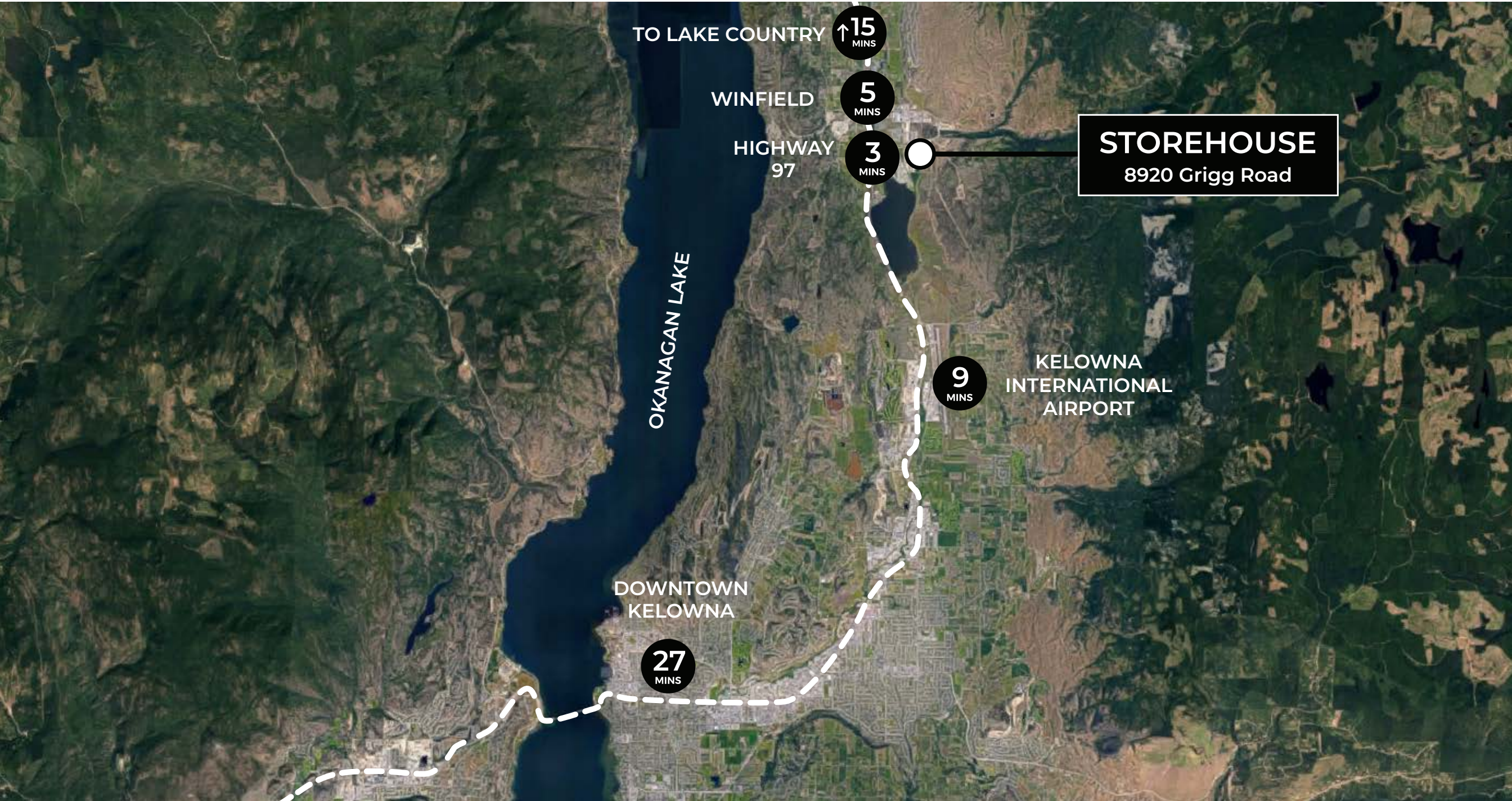
UNIT 204



UNIT 205



LOCATION



CONTACT

STEVE LAURSEN

PERSONAL REAL ESTATE CORPORATION

250.808.8101

stevelaursen@rlkcommercial.com

ROYAL LEPAGE KELOWNA

COMMERCIAL

www.rlkcommercial.com

This disclaimer shall apply to Steve Laursen Personal Real Estate Corporation (PREC*), RLK Commercial, Royal LePage Kelowna Real Estate Brokerage, and to all other divisions of the Corporation; to include all employees and independent contractors.

The information set out herein, including, without limitation, any projections, images, opinions, assumptions and estimates obtained from third parties (the "Information") has not been verified by Steve Laursen PREC*, RLK Commercial, and Royal LePage Kelowna does not represent, warrant or guarantee the accuracy, correctness and completeness of the Information.

Steve Laursen PREC* does not accept or assume any responsibility or liability, direct or consequential, for the Information or the recipient's reliance upon the Information.

The recipient of the Information should take such steps as the recipient may deem necessary to verify the Information prior to placing any reliance upon the Information. The Information may change and any property described in the Information may be withdrawn from the market at any time without notice or obligation to the recipient from Steve Laursen PREC*.

Steve Laursen PREC* and the Royal LePage Kelowna logo are the service marks of Steve Laursen PREC* and Royal LePage Kelowna.

Limited and/or its affiliated or related companies in other countries. All other marks displayed on this document are the property of their respective owners.

All Rights Reserved.